



DONALD R. SEAWELL GRAND BALLROOM



Why meet in Denver if you don't have a view? That's the philosophy behind the Donald R. Seawell Grand Ballroom, downtown Denver's "room with a view." Guests marvel at the panoramic Rocky Mountains and are amazed as a thousand fiber optic lights create a star filled canopy overhead.

The skilled event design staff ably transforms the room's personality to match the moods of your event. Elaborate theatrical lighting, state-of-the-art audio and visual capabilities, a parquet dance floor and delectable menu options from Epicurean Catering make every event in this pentagonal 10,000-square-foot ballroom unforgettable.

Mark Twain said love is the irresistible desire to be irresistibly desired. You'll love the Seawell Ballroom. ■

DONALD R. SEAWELL
GRAND BALLROOM
PER 8-HOUR DAY

Monday-Wednesday \$2,600

Thursday & Sunday \$2,900

Friday \$3,900

Saturday \$4,900



2009 SEAWELL GRAND BALLROOM RATES & INCLUSIONS

STANDARD RATES PER 8-HOUR DAY

Mon-Wed	\$2600	Fri	\$3900
Thur & Sun	\$2900	Sat	\$4900

All Audio Visual elements are supplied and staffed by The Denver Center for the Performing Arts. The staff of the Seawell Ballroom takes pride in the state-of-the-art lighting, audio and visual systems. The pricing for such elements is listed on the *Additional Event Services* sheet.

ABOVE RATES INCLUDE:

- Use of our 24 4' x 8' staging platforms in 8" leg increments
- Use of tables and chairs
- Sound including support for musicians or dj with access to house sound system, which allows maximum control of sound throughout the facility
- Lighting including:
 - ~ General wash for the stage, guest seating and other elements in the room
 - ~ Fiberoptics are available in 13 colors and create a "starry" effect. Specific colors can be decided on the event date.

- Labor including:
 - ~ Event Design Team: The Technical Director and Director of Events will visit with you six months before your scheduled event and carefully plan the best artistic and practical design of all elements of the event resulting in a detailed floor plan showing room dimensions. A cost estimate will be supplied by e-mail following the meeting for client approval.
 - ~ Event Coordinator who fine tunes details of your event from load-in to load-out and attends the event. This includes, but is not limited to, timeline, a/v & setup.



2009 SEAWELL GRAND BALLROOM ADDITIONAL EVENT SERVICES

In addition to its basic rental package, the Seawell Ballroom offers a variety of fee-based services to enhance your event. Pricing includes items the Ballroom has available, but does not include additional labor necessary to facilitate each item. The Ballroom design staff will clearly explain the number of hours needed to achieve your design look. Services are outlined below.

■ Lighting

- ~ Accent Lighting \$40/hour
Highlight specific elements in the room such as silent auction, buffets, stages, etc. 4 hour minimum (lighting instruments are no charge)
- ~ Custom Gobo \$140-\$1,200
- ~ Additional Gobo \$45
- ~ Stock gobo No charge
(for accent design lighting)
- ~ Pinspotting \$5/instrument
(dining tables, auction, buffets, etc.)
- ~ Additional Fixtures \$10/each
(not in stock in Ballroom)
- ~ Follow Spots \$150 + Labor
- ~ Projection \$150
(of logo or theme-related)
- ~ The Ballroom technical staff can design power-point, animated images and a “go to” slide for your event for an additional charge.

■ Video

- ~ Single Video Package \$500
(includes projector—any format, screen and video engineer. Non-standard placement costs may apply.)
- ~ Dual Video Package \$1,000
(includes two projectors—any format, 2 screens and video engineer. Non-standard placement costs may apply.)
- ~ Robotic Camera/IMAG \$400
(live images of program in room)
- ~ Additional Projectors & Screens
Pricing available upon request
- ~ Confidence Monitor \$200
- ~ Video Switcher \$200
(Required to switch between various video inputs—computer, DVD, camera, etc.)

■ Sound

- ~ Portable Sound System \$250
(mic, cd player, & 4 eon speakers)
- ~ Wireless Microphones \$35
(lavalier/lapel mics or handheld)
- ~ Additional Sound Engineer \$40/hour
(4 hour minimum)
- ~ Monitor Mix Ask for quote
(up to three mixes)

■ Elements for Scenery & Ambience

- ~ Dance Floor \$400
- ~ Piano \$275
(professionally tuned)
- ~ Mirror Ball \$300
- ~ Truss \$3/Foot
- ~ Chain Motors \$50/each
- ~ High speed Internet \$150
(wired or wireless)
- ~ Phone Line \$50
- ~ Decorative Fabric Panels \$25/each
- ~ Drape \$3-\$20/foot
(gold, platinum, black, white, etc.)
- ~ Chair Drop \$125
- ~ Additional Stage Platforms \$90
- ~ Additional Power \$10

■ Labor Rates

- ~ Audio, Visual or Sound Technician .. \$40/hour
- ~ Stage Manager \$40/hour
- ~ Rigger \$40/hour
- ~ Security Officer \$30/hour
- ~ Firefighter \$30/hour
- ~ Event Supervisor \$20/hour
- ~ Coat Check Attendant \$15/hour
- ~ Usher/Ticket Taker \$12/hour



DOWNTOWN HOTELS

PREFERRED HOTELS

WESTIN TABOR CENTER
1672 Lawrence Street
Denver, CO 80202
303/572-9100 • 800/228-3000

BROWN PALACE HOTEL
321 17th Street
Denver, CO 80202
303/297-3111 • 800/321-2599

HOTEL TEATRO
1100 14th Street
Denver, CO 80202
303/228-1100

ADAM'S MARK HOTEL
1550 Court Place
Denver, CO 80202
303/893-3333

HOTEL MONACO
1717 Champa Street
Denver, CO 80202
303/296-1717

COURTYARD BY MARRIOTT
934 16th Street
Denver, CO 80202
303/571-1114 • 800/321-2211

HYATT REGENCY DENVER AT THE COLORADO
CONVENTION CENTER
650 15th Street,
Denver, CO 80202
Tel: 303/436-1234

THE CURTIS
1405 Curtis Street
Denver, CO 80202
303/571-0300 • 800/525-6651

HYATT REGENCY
1750 Welton Street
Denver, CO 80202
303/295-1234 • 800/233-1234

EMBASSY SUITES
1881 Curtis Street
Denver, CO 80202
303/297-8888 • 800/362-2779

MARRIOTT CITY CENTER
1701 California Street
Denver, CO 80202
303/297-1300 • 800/228-9290

HOLIDAY INN
1450 Glenarm Place
Denver, CO 80202
303/573-1450 • 800/423-5128

OXFORD HOTEL
1600 17th Street
Denver, CO 80202
303/628-5400 • 800/228-5838

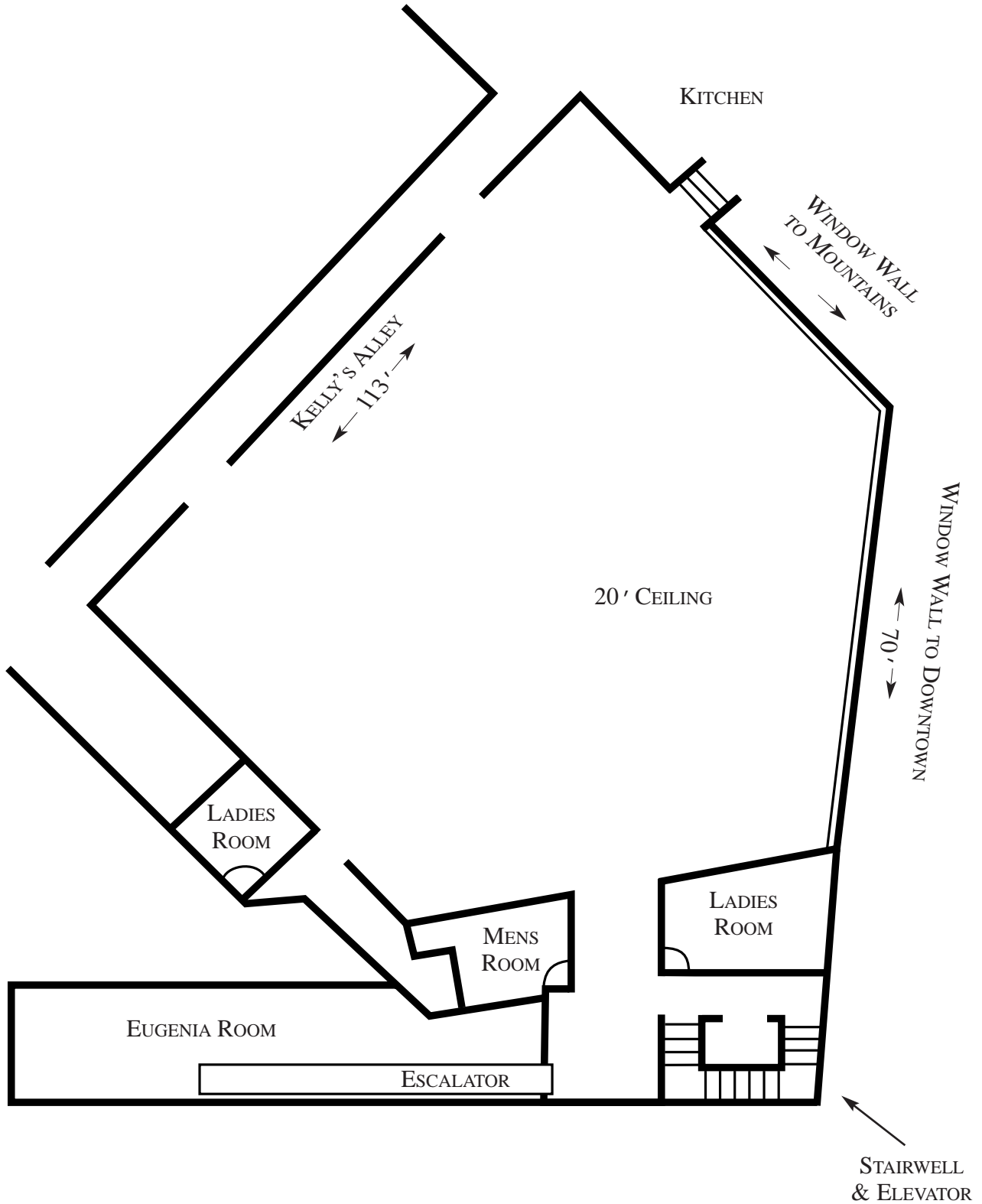
THE MAGNOLIA
818 17th Street
Denver, CO 80202
303/607-9000 • 800/422-2090

WARWICK HOTEL
1776 Grant Street
Denver, CO 80203
303/861-2000 • 800/203-3232



SEAWELL GRAND BALLROOM FLOORPLAN

MEASUREMENTS ARE APPROXIMATE





DIRECTIONS & PARKING FOR SEAWELL GRAND BALLROOM

